



Chillaz

Facts and figures

Raw material:	eucalyptus
Country of origin:	subtropical areas
Moisture transport:	++
Drying time:	~
Tensile strength:	++
Smell development:	++
Eco-friendliness:	++
Skin sensibility:	++
Pilling:	~

Chillaz

Raw material - eucalyptus

The basis for TENCEL[®] is eucalyptus wood solely grown in sustainable forestry. Eucalyptus is an interesting raw material, as it is fast growing and can be planted for industrial use in so called “wood farms”- without artificial irrigation or genetic engineering.

It is an evergreen plant and can grow up to 40 meters.

The logo for Chillaz, featuring the word "Chillaz" in a white, handwritten-style font. The letter "C" is stylized with a red outline that loops around the top and left sides.

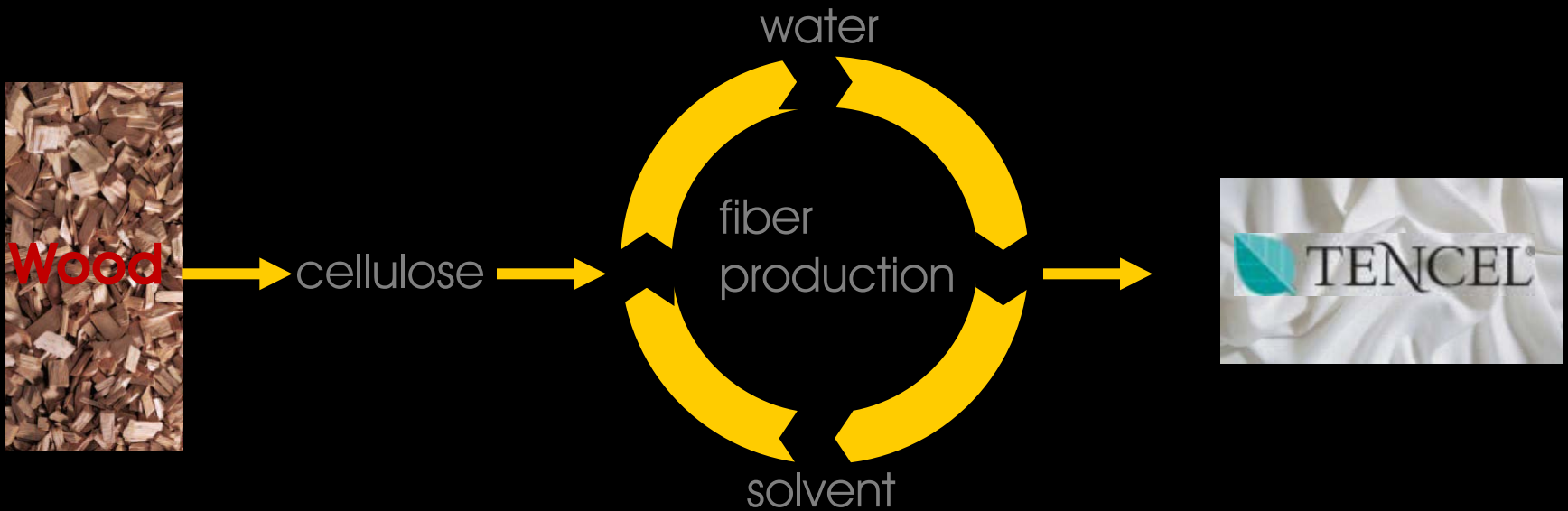
Raw material - eucalyptus

The eucalyptus tree originates from Australia and Tasmania as well as eastern Indonesia. Nowadays some species are also grown in different other subtropical countries in the world.

In Australia 70 % of the tree population consists of eucalyptus. There's no other continent with such a domination by one single kind of tree.

The logo for 'Chillaz' features the word 'Chillaz' in a white, handwritten-style font. A thick red line forms a large, stylized 'C' that encircles the beginning of the word.

Production



Chillaz

Production

Eucalyptus is being barked, hackled and boiled up until the so called “wood fiber pulp” develops. This pulp is the mass where the natural cellulose fibre TENCEL[®] is gained from. During the production process for TENCEL[®] the cellulose is being solved in an organic solvent (aminoxid, which is also used in body cosmetics), extruded again using a wet-spinning method and regenerated to the fiber.

The logo for Chillaz, featuring the word "Chillaz" in a white, handwritten-style font. The letter "C" is stylized with a red outline and a white fill, while the rest of the letters are white.

Properties

Due to its nano fibril structure TENCEL[®] combines a variety of advantages.

The fiber is

- smooth like skin
- strong like polyester
- cool like linen
- warm like wool and
- more absorbent than cotton.

The logo for 'Chillaz' is written in a stylized, cursive font. The letter 'C' is a large, thick red circle. The letters 'hilla' are in a dark grey or black color, and the 'z' is also in dark grey or black. The overall style is modern and artistic.

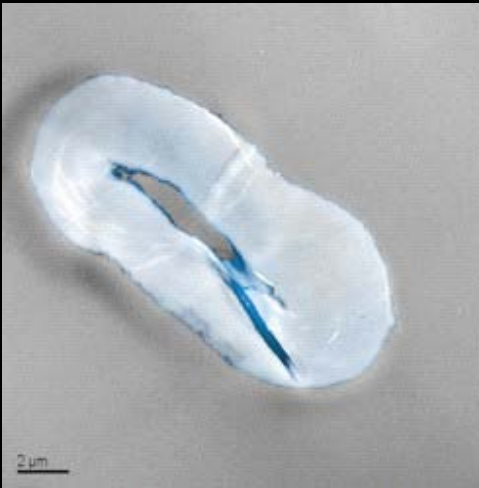
Moisture management

In a very natural way TENCEL[®] absorbs excessive moisture and yields it back to the environment. New functional features can be created thanks to the controlled and regular arrangement of the nano fibrils in the TENCEL[®] fiber.

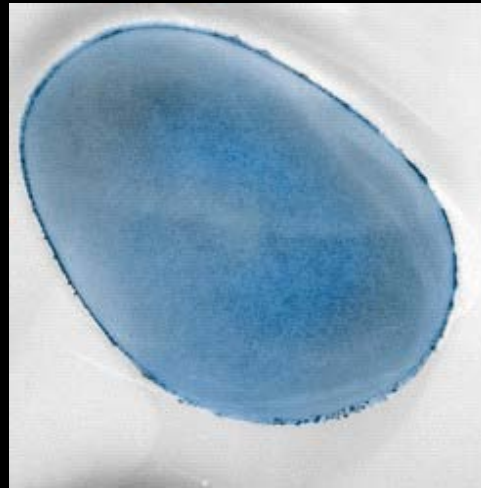
Nano fibrils are hydrophilic and guarantee an ideal absorption of humidity with an optimal microclimate on the skin.

The logo for Chillaz, featuring the word "Chillaz" in a white, handwritten-style font. The letter "C" is stylized with a red outline that forms a partial circle around the start of the word.

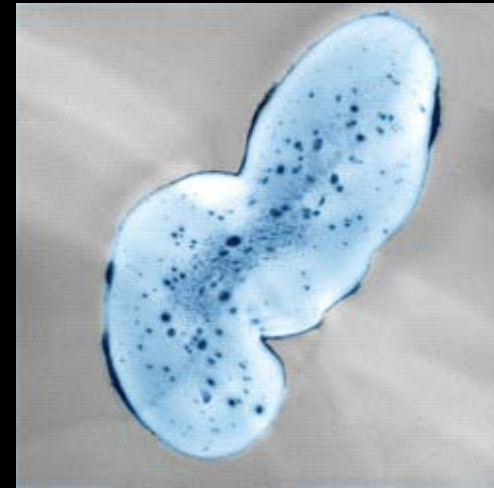
Moisture management



Cotton



TENCEL®



Lenzing Modal®

Moisture management

The ideal moisture transport is unique compared to synthetic fibers. Those are not able to absorb humidity into the inner fiber. Compared to cotton TENCEL[®] absorbs 50 % more humidity.

With an air humidity of 65 % TENCEL[®] in contrast to other fibers has still capacities to transport wetness away from your skin.

The logo for Chillaz, featuring the word "Chillaz" in a white, handwritten-style font. The letter "C" is stylized with a red outline and a red shadow effect, making it stand out from the rest of the text.

Skin sensibility

The skin is our biggest respiratory organ. It protects us, regulates our body temperature and maintains our water balance. TENCEL[®] supports those functions and acts like a second skin. The subjective wellbeing depends strongly on moisture absorption and the structure of the fiber surface. Harsh fibers in particular can lead to skin irritations. TENCEL[®] has an extraordinarily smooth surface and guarantees a feeling like being “fondled”. The secret of its smooth surface is the low stiffness of the fiber.

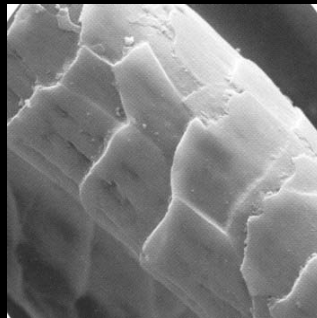
The logo for Chillaz, featuring the word "Chillaz" in a white, handwritten-style font. A thick red line forms a large, stylized letter 'C' that encircles the beginning of the word.

Skin sensibility

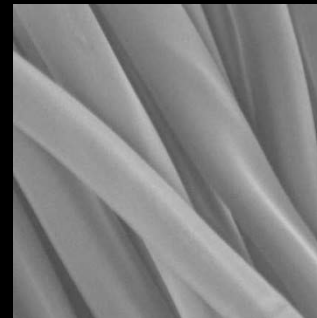
When comparing the surface of cotton, wool and TENCEL[®] fibers, the difference is obvious. Wool has a flaked surface while cotton has a rugged and snatchy one. TENCEL[®] on the other hand is smooth and limber.



Cotton



Wool



TENCEL[®]



Skin sensibility

The combination – smooth fiber surface and ideal moisture absorption – favours a positive microclimate on the skin, reducing the disturbances of people with delicate skin. According to a research conducted in Germany wearing clothes made of TENCEL[®] helps to improve the subjective well-being. (Dermatological research on skin kindness of TENCEL[®], 2004, conducted by Univ. Prof. Dr. T.L.Diepgen, Heidelberg, Germany).

The logo for Chillaz, featuring the word "Chillaz" in a white, handwritten-style font. The letter "C" is stylized with a red outline and a red shadow effect, while the rest of the letters are white.

Skin sensibility

Furthermore the use of chemicals in the fiber plays a crucial role when it comes to very delicate skin.

TENCEL[®] is pure and does not irritate the skin. One more advantage compared to other natural fibers.

The logo for Chillaz, featuring the word "Chillaz" in a white, handwritten-style font. The letter "C" is stylized with a red outline and a white fill, while the rest of the letters are white.

Hygiene in a natural way

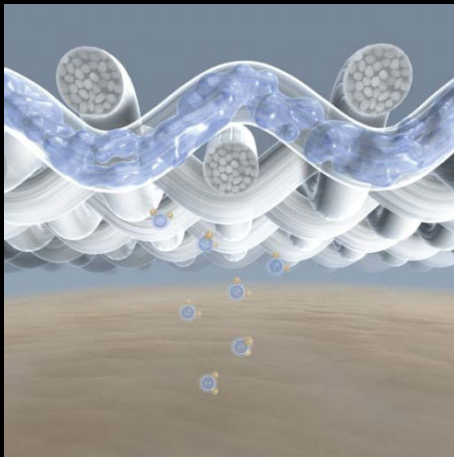
When it comes to hygiene and bacterial growth, TENCEL® due to its natural properties offers whole new perspectives that help our skin to relax and look healthier. Bacterial growth has no chance on TENCEL®.

In a natural way bacterial growth is being avoided. The decisive factor for this is the fiber's optimal moisture management.

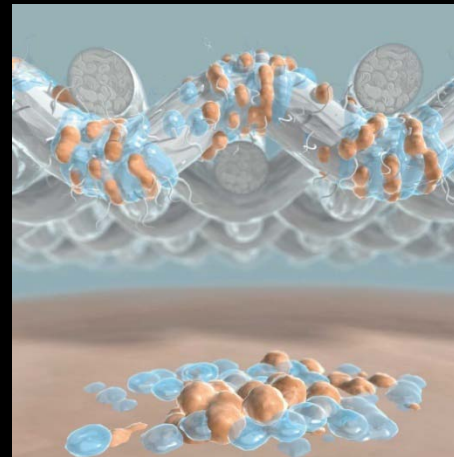
The logo for Chillaz, featuring the word "Chillaz" in a white, handwritten-style font. The letter "C" is stylized with a thick red outline that loops around the top and bottom of the letter.

Hygiene in a natural way

When humidity emerges it is transported directly from the skin into the inner fiber. Therefore no liquid film develops on the skin and bacteria cannot emerge.



TENCEL®

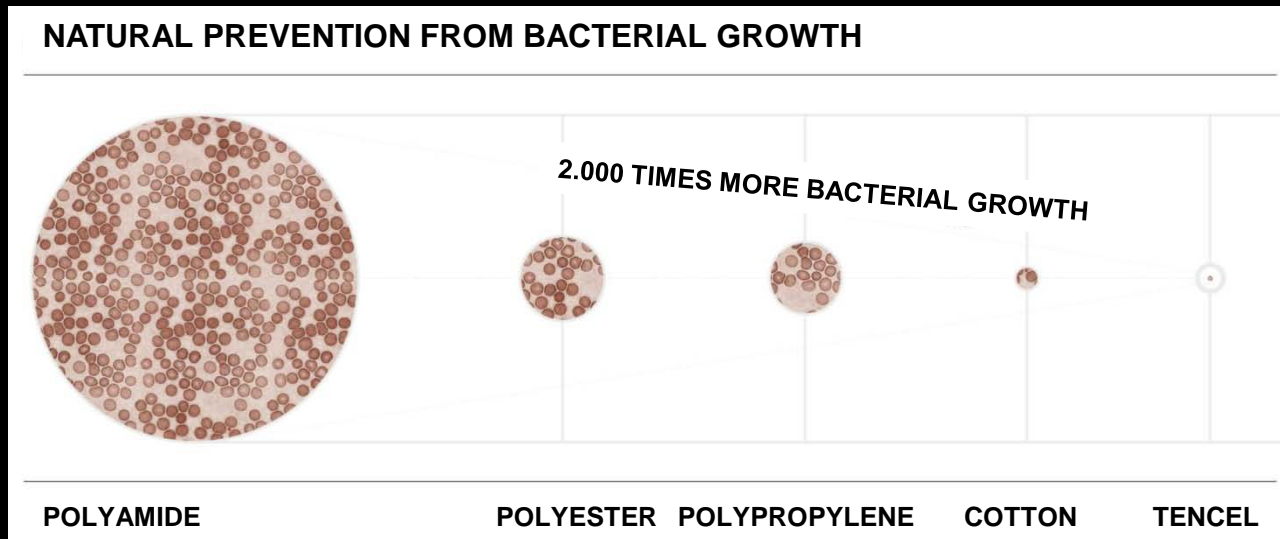


Synthetic fibers



Hygiene in a natural way

Completely without any addition of chemicals TENCEL[®] prevents bacterial growth. In synthetic fibers bacterial growth is 2.000 times higher than in TENCEL[®].



Chillaz

Stability

High firmness in wet as well as dry conditions increases the stability of each textile product.

Even if TENCEL[®] accounts for only a small share of the yarn or tissue, the cloth becomes particularly resistant.

The logo for Chillaz, featuring the word "Chillaz" in a white, handwritten-style font. The letter "C" is stylized with a thick red outline that loops around the top and left sides of the text.

Sustainable progress derives from nature

The production of TENCEL® is revolutionary. The production process is based on a spinning method using organic solvent and it presents the most important achievement in cellulose fiber technology. The revolutionary part is the recycling system leading the solvent through the process.

The solvent is being recycled to 99,5 %, the remaining emissions are degraded in adapted biological clarification plants.

The logo for Chillaz, featuring the word "Chillaz" in a white, handwritten-style font. The letter "C" is stylized with a thick red outline that loops around the top and left sides of the text.

Sustainable progress derives from nature

The production process has been awarded with the “European Award for the Environment” by the European Union.

TENCEL is gained from eucalyptus wood and thus bio-degradable to 100%. The wood used to produce TENCEL is grown in sustainable forestry.

The logo for Chillaz, featuring the word "Chillaz" in a white, handwritten-style font. The letter "C" is stylized with a red outline that loops around the top and left sides.

ECO-Label



The Lenzing company has been awarded with the European ECO-Label. This award is given only to the best companies in their industry, as the European Union sets very stringent directives that have to be followed in order to receive the award.

Not only the product itself is being controlled, but the whole production process. The ECO-flower therefore stands for the best eco-friendly products.

Chillaz

TENCEL® – the eco fiber

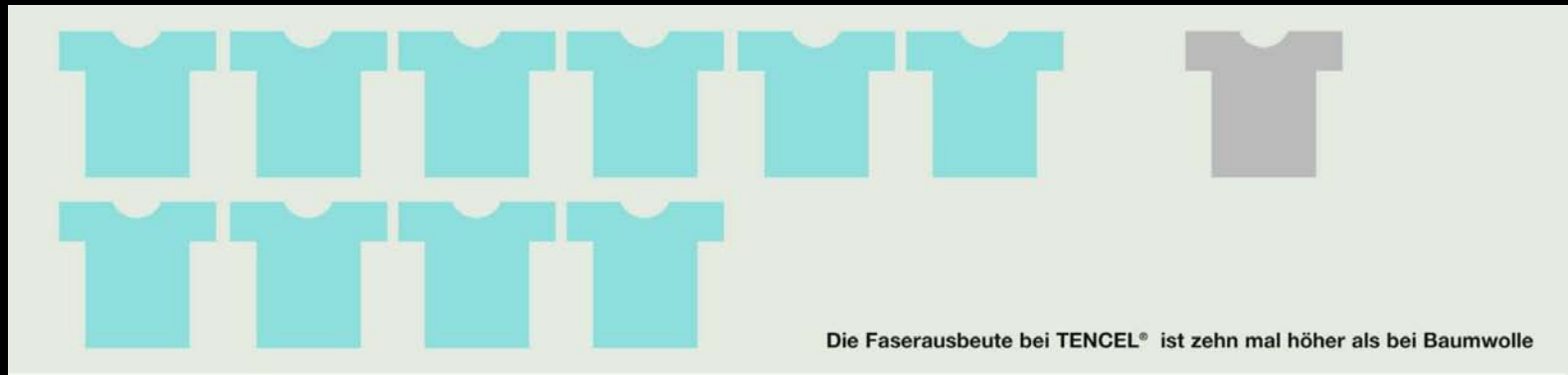
In contrast to the cultivation of conventional cotton eucalyptus does not need any use of water or pesticides. Furthermore it can be grown on margin areas that cannot be used for food production.

The crucial advantage is that TENCEL® fibers produce an outcome which is ten times higher than the outcome of conventional cotton fibers.

The logo for Chillaz, featuring the word "Chillaz" in a white, handwritten-style font. The letter "C" is stylized with a red outline and a red shadow effect, while the rest of the letters are white.

TENCEL® – the eco fiber

6 square meters of ground are the basis for one cotton T-shirt or even 10 T-shirts made of TENCEL®. An argument getting more and more important in a world where the population is fast growing and ground is a scarce property.



Chillaz